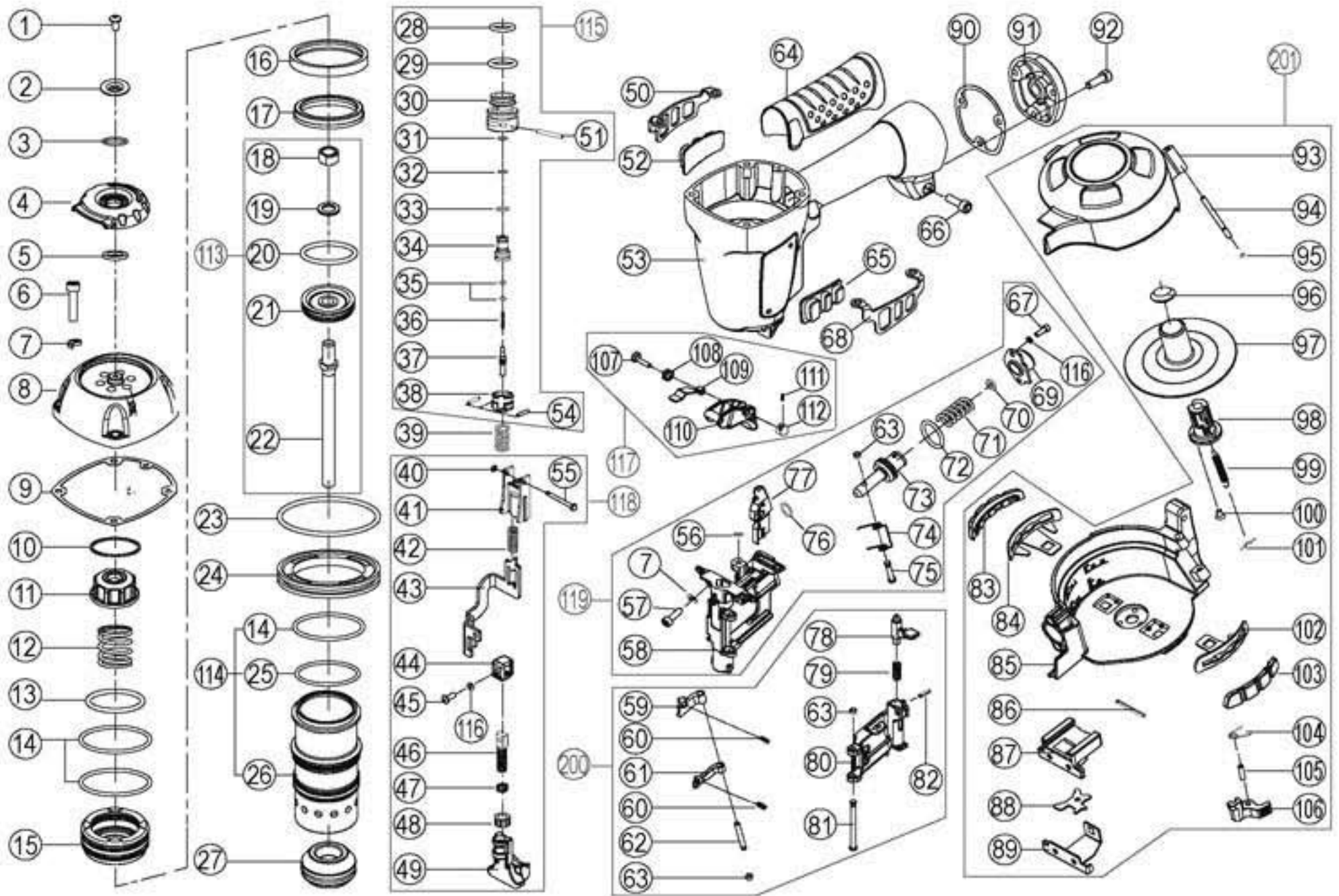


Air Locker

Model # RN45AB2



No.	Description	Qty.	No.	Description	Qty.	No.	Description	Qty.	No.	Description	Qty.
1	Screw	1	29	O-Ring	1	49	Release Catch A	1	78	Gate Lock	1
2	Washer	1	30	Trigger valve head	1	55	Pin	1	79	Spring	1
3	O-ring	1	31	O-Ring	1	116	Washer	1	80	Door	1
4	Exhaust Cover	1	32	O-Ring	1	50	Prevent fall frame(B)	1	81	Pin	1
5	Washer	1	33	O-Ring	1	52	Prevent fall frame(B)	1	82	Pin	1
6	Screw	1	34	Trigger valve guide	1	53	Body	1	64	Handle Grip	1
7	Washer	5	35	O-Ring	2	119	Piston Driver	1	65	Prevent fall frame(1
8	Cylinder CAP	1	36	Spring	1	7	Washer	1	66	Screw M5*22	1
9	Gasket	1	37	Trigger valve stem	1	56	O-Ring	1	67	Screw	1
10	Washer	1	38	Seal,Air	1	57	Screw	1	68	Prevent fall frame(A)	1
11	Piston Stopper	1	51	Pin	1	58	Outlet Site	1	201	Magazine Assembly	1
12	Spring	1	54	Pin	2	59	Stopper A	1	83	Prevent fall frame(B)	1
13	O-Ring	1	39	Spring	1	60	Spring	1	84	Prevent fall frame(B)	1
14	O-Ring	3	117	Trigger Assembly	1	61	Stopper B	1	85	Magazine	1
15	Head Valve Piston	1	107	Pin	1	62	Pin	1	86	Pin	1
16	Lining Ring	1	108	Spring	1	63	Ring	1	87	Sliding Block	1
17	Cylinder Ring	1	109	Contact lever	1	70	Stopper	1	88	Washer	1
113	Driver blade set	1	110	Trigger	1	71	Spring	1	89	Stopper	1
18	Screw	1	111	Pin	1	72	O-Ring	1	93	Tail Cover	1
19	Washer	1	112	Trigger rotating wrench	1	73	Piston Head	1	94	Pin	1
20	O-ring	1	118	Safety Pushing Lever Assembly	1	74	Spring	1	95	O-Ring 3.15*1.8	1
21	Driver Piston	1	40	Ring	1	75	Pin	1	96	Stopper (A)	1
22	Driver Blade	1	41	Catch Guide Plate	1	76	O-ring	1	97	Tray	1
23	O-Ring	1	42	Spring	1	77	Pusher	1	98	Screw	1
24	Spacer	1	43	Release Catch	1	116	Washer	1	99	Spring	1
114	Cylinder Set	1	44	Catch Guide Plate	1	57	Screw	1	100	Screw	3
14	O-Ring	1	45	Screw	1	200	Magazine Door Assembly	1	101	Stopper(B)	1
25	O-ring	1	46	Release Catch B	1	59	Stopper A	1	102	Prevent fall frame(A)	1
26	Cylinder	1	47	Spring	1	60	Spring	1	103	Prevent fall frame(A)	1
27	Bumper	1	48	Screw	1	61	Stopper B	1	104	Spring	1
115	Trigger Valve Set	1	49	Release Catch A	1	62	Pin	1	105	Pin	1
28	O-Ring	1	50	Prevent fall frame(B)	1	63	Ring	2	106	Click Lever	1